



EDW-30T Personal Tracker (GPS+SMS+GPRS)

User Guide

Version 4.0



Content

| | |
|---|-----------|
| USER GUIDE | 1 |
| VERSION 4.0..... | 1 |
| 1 INTRODUCTION | 4 |
| 2 FEATURE:..... | 6 |
| 3 SPECIFICATION..... | 7 |
| HARDWARE | 7 |
| OTHER..... | 8 |
| 4 HARDWARE DESCRIPTION | 9 |
| 5 GET STARTED | 11 |
| (5.1) ACCESSORIES..... | 11 |
| (5.2) CHARGE BATTERY | 13 |
| (5.3) BUY SIM CARD | 13 |
| (5.4) INSTALL SIM CARD | 14 |
| 6 OPERATION | 15 |
| 7 DISPLAYING LOCATION ON MAP | 23 |
| 8 MORE PROFESSIONAL SMS INSTRUCTION | 27 |
| 9 SMS INSTRUCTION EXAMPLE:..... | 30 |
| 10 GPRS COMMUNICATION SETTING | 31 |
| 11 CAUTION: | 34 |
| 12 DIY !!! BUILD YOUR CONTROL CENTER SYSTEM ON YOUR PC | 35 |
| 13 TROUBLE SHOOTING..... | 39 |
| ATTACHMENT :WORLDWIDE APN (ACCESS POINT NAME) LIST..... | 46 |

1 Introduction

EDW-30T is a personal remote position device with build-in GPS and GSM/GPRS modules. It is a small size, high accuracy remote location tracking device.

Based on GPS satellite, it provides accurate position information under dynamic conditions.

Personal remote position device transmit the longitude and latitude coordinates to authorized cell phone.

You can use the mini-GPS tracker to protect and locate children, old people, pets...etc, you can also use it for security and any other purposes that needs remote positioning such as asset protection and animal tracking.





2 Feature:

- ◆ Build-in GPS personal locator.
- ◆ GSM /SMS communication or GPRS TCP/UDP connection .
- ◆ Works worldwide!
 - Support 3-frequency GSM 900/1800/1900 MHZ
 - And 4-frequency GSM 850/900/1800/1900 MHZ.(Optional)
- ◆ High sensitivity, new technology and latest GPS SiRF-Star III chipset!
 - Excellent for fixing the position even at a weak signal status.
 - Work well even in areas with limited sky view like urban canyons .
- ◆ Compact size, and smaller than one name card. Easy to hide
- ◆ Very Low power consumption
- ◆ Fast Signal Acquisition
- ◆ Support single location and continuous tracking
- ◆ Support location triggered by tracker
- ◆ Support location triggered by authorized cell phone
- ◆ Support alarm and remote monitor
- ◆ Support quick dialing buttons for 3 preset phone numbers
- ◆ Support check location by SMS and GPRS
- ◆ Monitors can track the person without interfering him,
LIVE! Real-Time tracking!
- ◆ Locate the locator holder by the mobile phone via SMS
(short messaging system).
- ◆ SOS button send out exact location for immediate rescue/action.
- ◆ Geo-fencing to restrict movement to a defined radius.
- ◆ No monthly service charges to be paid to the call center

New feature:

- ★ USB configuration cable for bulk number
- ★ waterproof case;
- ★ optional magnetic mounted ;
- ★ with optional external battery (extend to work for 7 days) ;
- ★ optional pet collar ;
- ★ **DIY Tracking! Working with our GSM Modem and GPRS software kits, customer can watch the position and trace of their object on the map in real-time automatically at very low cost without monthly payment and without any manual input. Support almost all navigation maps including Google map/earth.**

3 Specification

| | |
|--------------------|---|
| Hardware | |
| GSM module | embedded GSM 900/1800/1900Mhz embedded GSM 850/900/1800/1900Mhz (Optional) and GPRS TCP/UDP |
| GPS Chipset | latest GPS SiRF-Star III chipset |
| GPS Sensitivity | -158Db |
| GPS Frequency | L1, 1575.42 MHz |
| C/A Code | 1.023 MHz chip rate |
| Channels | 20 channel all-in-view tracking |
| Position Accuracy | 10 meters, 2D RMS |
| Velocity Accuracy | 0.1 m/s |
| Time Accuracy | 1 us synchronized to GPS time |
| Default datum | WGS-84 |
| Reacquisition | 0.1 sec., average |
| Hot start | 1 sec., average |
| Warm start | 38 sec., average |
| Cold start | 42 sec., average |
| Altitude Limit | 18,000 meters (60,000 feet) max. |
| Velocity Limit | 515 meters/second (1000 knots) max. |
| Acceleration Limit | Less than 4g |
| Jerk Limit | 20 m/sec |

| | |
|-----------------------|---|
| | |
| Other | |
| Operating temperature | -25° to 65° C |
| Humidity | 5% to 95% Non-condensing |
| Dimension | 76 mm × 46 mm × 25 mm |
| Voltage | Rechargeable and replaceable 1300 mAh battery (3.7V), 5V for charging input. |
| Charging connector | DC 5V (USB port) |
| Standby time | Over 60 hours |
| LED | 3 LEDs showing Power, GPS and GSM status, And other operation status. |
| KEY | 3 Keys for SOS Emergency key, quick dial key B , quick dial key C |

4 Hardware description

Red LED --- indicate power state:

| State | Meaning |
|----------------------|---|
| Constant dark | the power is too low to work or Charging was completed. |
| Light 0.1s dark 0.1s | The power is not enough |
| Constant Lighting | Charging |
| Light 1s dark 2s | Working |

Blue LED -- indicate the GPS signal state:

| State | Meaning |
|----------------------|------------------------|
| Constant Lighting | One key be pressed |
| Light 0.1s dark 0.1s | Initial |
| Light 0.1s dark 2.9s | GPS receiver work well |
| Light 1s dark 2s | No GPS signal |

Green LED -- indicate the GSM signal state:

| State | Meaning |
|----------------------|------------------------|
| Constant Lighting | One call is coming |
| Light 0.1s dark 0.1s | Initial |
| Light 0.1s dark 2.9s | GSM receiver work well |
| Light 1s dark 2s | No GSM signal |



Button Function description

| Button | Meaning |
|---------------|--|
| Power button | Turn on/Turn off . Please see 6.1 for details for more details. |
| SOS button | You can assign a phone number to the SOS button .When this button is pressed,EDW-30T will send it's GPS coordinates to the preset phone number by SMS ,at the same time,EDW-30T will dial the preset phone number. |
| Call B button | You can assign a phone number to the Quick Call B button .when this button is pressed,EDW-30T will dial the preset phone number. |
| Call C button | You can assign a phone number to the Quick Call C button .when this button is pressed, EDW-30T will dial the preset phone number. |

5 Get Started

(5.1) Accessories

1. USB cable charger



- 2 Wall charger and car charger



3. Earphone with mini microphone



4. CD ROM (Including our product document and program)

5. USB Configuration cable for bulk number (Optional)



(5.2) Charging the battery

Before you can use the EDW-30T, you must FULLY charge the battery by USB cable at least **2** hours under the power-off condition.

Charger state indicate :

Red light is On indicates that the battery is still charging.
Red light is Off indicates that battery is full.



(5.3) Buying SIM card

Buy the SIM card from your local network provider .

(Note: Please make sure that your SIM card support SMS function and have enough credit.)

(5.4) Installing the SIM card

Insert the SIM card in EDW-30T as in the picture below.



6 Operation

(6.1) Turn On / Turn Off

Turn on :

When the device is off ,push the power button to one side and wait for about 20 seconds . It will enter the standby mode . It is for the best to be outdoors **for the device to receive good GPS signal when you turn it on.**

Turn off :

When the device is on ,push the button to off side and wait for 3 seconds .When the LEDs lights go out it indicates that the device is off



(tips: How to get better GPS signal:

- 1 Working outdoor,EDW-30T can get better GPS signal;
- 2 The front side of EDW-30T should be placed toward sky.)

(6.2) Apply for one position service

No matter where you are ,when you want to know the position of your tracker , send a SMS or make a telephone call to EDW-30T;it will report its location back to you by SMS .

Edit a message as following format, then send it to EDW-30T: Format: **W+Password+, +000**
(default password is : 000000)

For example: **W000000,000**



The EDW-30T will send back an SMS with it's GPS coordinates



Position Data means :

Longitude = 114 degree - 04 cent - 57.74 second

Latitude = 22 degree - 32 cent - 40.05 second

(**Tips:** Apply for one position service by **another easier way:**

- (a) Dial the EDW-30T telephone number by your mobile phone
- (b) After listening the ring of EDW-30T for 10~20 seconds, hang off the phone
- (c) Then, after 20 second, your mobile phone will receive the Position by SMS.)

(6.3). Set a time interval for tracking report function

Tracking report function can be turned on or off according to the requirements of the user .**Tracking function will continually report tracker's position until it get the stop command. In this continuous tracking mode,EDW-30T will send one position message at a preset time interval.**

(It means that EDW-30T will send one position message at every time interval)

Step1: Edit a message as the following format, then send it to EDW-30T:

----- **W+Password+,+002,+XXX**

(Note : XXX Unit: preset minutes interval

-- if XXX=000 it is STOP tracking)

For example : **W000000,002,005**

(its means that EDW-30T will send Position Data each 5 minute.)



Step 2: EDW-30T will send back one SMS ---Set Time(preset time interval) OK

In this example ,the SMS is **Set Time (005 Min) OK**

This SMS means that EDW-30T is in tracking mode now and preset time interval is 5 minutes.

Step3: EDW-30T will send back position SMS at present time interval.

In this example ,the SMS will send back position data at every 5 minutes. The target phone will receive the Position Data each 005 minute.



Position Data means :

Longitude = 114 degree - 04 cent - 57.74 second
Latitude = 22 degree - 32 cent - 40.05 second

(Note:

if SMS show:

Longitude = 000 degree - 00 cent - 00 second

Latitude = 00 degree - 00 cent - 00 second

It means that GPS signal is too weak to work well)

(6.4). Stop continuous tracking report function

This function is used to turn off tracking report function.

Edit a message as the following format, then send it to EDW-30T:

Format: W+passwaord+,+002+,+000

For example : **W000000,002,000**

The EDW-30T will send back one SMS-----**Stop Timer OK**. This message means tracking report function is turned off.

(6.5) Set preset phone number for SOS key.

This function is used to set what telephone number will be dialed when press SOS key..

Step1 . Edit a message as the following format ,then send it to EDW-30T

W+password+,+003+,+3+,+1+,+ area number +telephone number

For example

“W000000,003,3,1,008613628888444”

Step2 .About ten seconds later, the EDW-30T will send back an SMS-----

Set Tel OK/003,3,1,008613628888444.This message means the preset phone number for SOS key is OK.

step3 .Press the SOS button, the EDW-30T will send one Alarm

SMS to “0086 13628888444”, and then dial “ 0086 13628888444”.

Note:

(a) After the SOS button is pressed and the call is made you can talk with the other party using the headphone and microphone

(b) Press the Call Key B to hang up or cancel the SOS call

(c) **After pressing the SOS key,EDW-30T will stay in the emergency state until you press the Call key B again to cancel the SOS call**

(d) About area number

In different countries ,the area number may be different .Please contact your telecommunication provider to get the area number .

If any question about this function ,you're very welcome to contact our technical support team.

5(6.6) How to make an SOS call?

aThis function is especially useful in emergency. When SOS key is pressed,EDW-30T will send 2 SOS SMS with the GPS coordinates to the preset phone numbers.

At the same time,EDW-30T will dial the preset telephone numbers. When the telephone is picked up, 2 way communication starts.

Once the SOS button is pressed, an SOS call will be made.



(6.7) Cancel a SOS call

When in SOS state ,press Call B key to hang up the phone , exit SOS state and return normal state.



(6.8) Dial the preset phone number by Call B or Call C

Press the Call B button/ Call C button once, EDW-30T will call the preset phone number of Call B/Call C, then you can talk with another people.



If you want to complete this talking, you can hang up the calling by pressing the Call B button.

(6.9) Receive one coming call

When one call coming, the green light will blink , you can press SOS key to receive the coming call, then talk with another people by ear microphone.



If you want to complete this talking, you can hang up the calling by pressing the Call B button.

7 Displaying location on map

(7.1) Download google earth software from <http://earth.google.com/>

(7.2) Start the Google Earth software.(For more information about Google Earth software, please refer to <http://earth.google.com/>) As following picture shows:



Or you can start the Internet Explorer and type "http://maps.google.com" to connect to Google Map website for displaying the location map.

(7.3) You can get the latitude & longitude data by sending “W+Password +, +000” SMS command Code to the GPS Tracker EDW-30T. Input the latitude and longitude that you receive from SMS and click on search button. The Google earth will display the location map for you.

For example:

Step1: we you see the Position Data from SMS in you mobile phone:

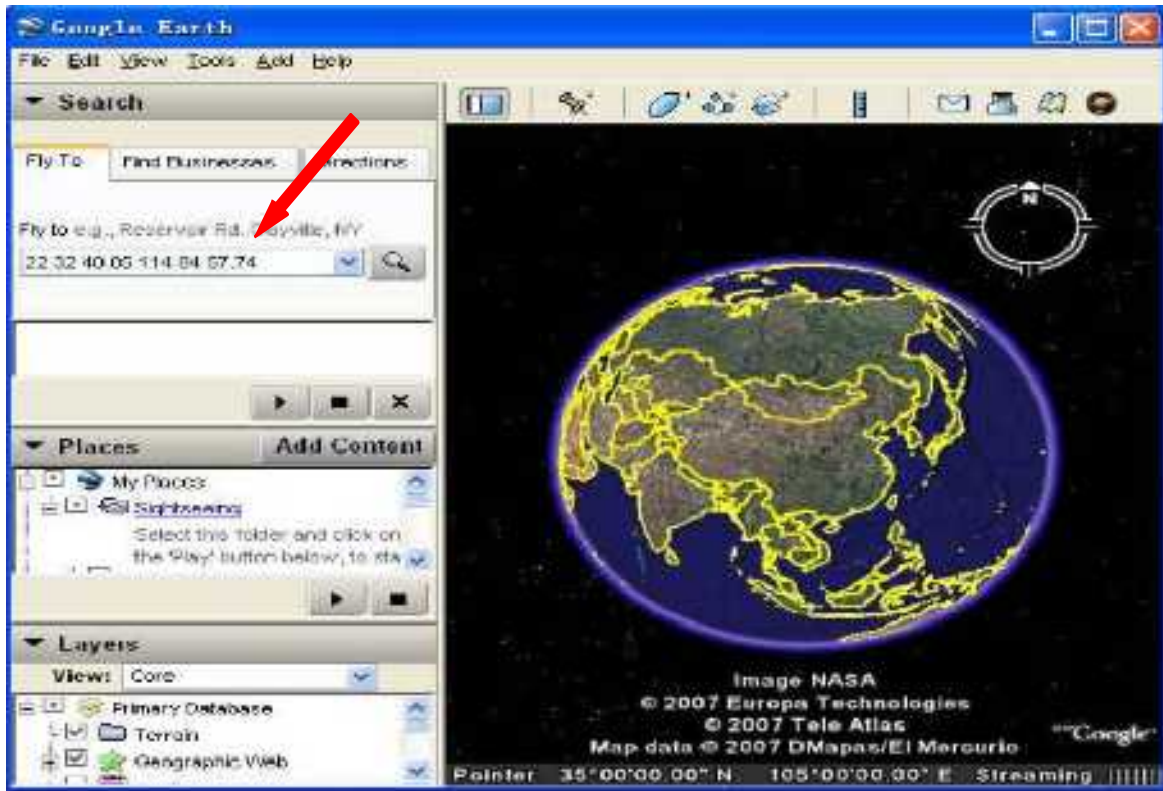
Last: Latitude = 22 32 40.05N

Longitude = 114 04 57.74E

Step2: Now you can Input the latitude and longitude as following, and click on the searching button.

(Note: *pay attention to change the Position Data Format*)

format : 22 32 40.05 114 04 57.74



Step3:Now you can find the exact position of the tracker.



(7.4) Or you can use local map software on **PDA** or **Car Navigation Device** , input the Position Data.





III More Professional SMS Instruction

***** is user password , and init password is 000000

| | SMS Instruction | Format | Note |
|---|---|--------------------------|--|
| 1 | Request one position | W*****,000 | |
| 2 | Modify user password | W*****,001,##### | ***** is old password ##### is new password |
| 3 | Set the time internal of Continuous tracking when in SMS working mode | W*****,002,XXX | XXX(3 digital) =000,stop =[1,999] time internal (unit: mins) |
| 4 | Set a preset phone number for SOS button/ Call B button/ Call C button; When this button is pressed, EDW-30T will dial the preset number. | W*****,003,F,P,TelNumber | F=0, close this function =1, only send alarm SMS to the preset number =2, only Call the preset number =3, Send alarm SMS ,then Call the preset number P=1, Set the preset number for SOS key =2, Set the preset number for Call B =3, Set the preset number for Call C TelNumber: Preset Tel number (TelNumber must <16 digits) |
| 5 | Set low power alarm When the EDW-30T voltage is lower than the preset value, send one lower power alarm SMS to the SOS preset number. | W*****,004,X | X (voltage preset value) =0 , close =1, <3.3V send SMS alarm =2 , <3.4V send SMS alarm =3 , <3.5V send SMS alarm (default) =4 , <3.6V send SMS alarm =5 , <3.7V send SMS alarm |
| 6 | Set over speed alarm When the EDW-30T speed higher than the preset value, EDW-30T will send one over speed alarm SMS to the SOS preset number. | W*****,005,XX | XX (the speed preset value) =00 , close =[01<XX<20] (unit: 10Km) |

| | | | |
|---|---|-------------------------|---|
| 7 | <p>Set Geo-fence alarm</p> <p>When the EDW-30T move out preset scope, EDW-30T will send one Geo-fence SMS to the SOS preset number.</p> | W***** ,006,XX | <p>XX (preset distance to original place)</p> <p>=00 close =01 30m =02 50m =03 100m =04 200m =05 300m =06 500m =07 1000m =08 2000m</p> |
| 8 | <p>Extend setting</p> <p>(note: Please use this instruction carefully)</p> | W***** ,008,ABCDEFGG### | <p>A=0 , Close position report function which get position SMS by Calling EDW-30T</p> <p>A=1 , Open position report function which get position SMS by Calling EDW-30T</p> <p>B=0, position SMS format be analyzed in order to read easily.</p> <p>For example: <i>Longitude = 114 degree - 04 cent - 57.74 second</i> <i>Latitude = 22 degree - 32 cent - 40.05 second</i></p> <p>B=1, position SMS format is NMEA 0183 Format</p> <p>For example: <i>\$GPRMC,072414.000,V,3114.3763,N,12131.3255,E,0.00,0.00,050805,*00</i></p> <p>C=0, EDW-30T do NOT hung up when one call incoming .</p> <p>C=1, EDW-30T hung up after 4~5 rings when call incoming</p> <p>D=0, EDW-30T do NOT send one notice SMS to SOS preset number when the EDW-30T power on</p> <p>D=1, EDW-30T do send one notice SMS to SOS preset number when the EDW-30T power on</p> <p>E=0, EDW-30T do NOT shut down automatically when the power voltage lower than 3V</p> <p>E=1, EDW-30T will shut down automatically when the power voltage lower than 3V</p> |

| | | | |
|----|--|--------------------|--|
| | | | <p>F=0, EDW-30T do NOT send the notice SMS to the SOS preset number when the GPS signal is weak</p> <p>F=1, EDW-30T send the notice SMS to the SOS preset number when the GPS signal is weak</p> <p>G=0, Open 3 LED when EDW-30T works G=1, Close 3 LED when EDW-30T works ###, end char</p> <p>(default value should be : ABCDEFG=1011110)</p> |
| 9 | Set sleep mode for saving power. | W*****,021,XX### | <p>XX=00 close sleep mode XX=01 sleep XX=02 deep sleep</p> |
| | GPRS setting | | |
| 10 | Set the Tracker ID for EDW-30T for GPRS | W*****,010,ID | <p>ID : the Tracker ID of the tracker,it may set to telephone number according the SIM card of EDW-30T</p> <p>(Tracker ID must be < 14 digits)</p> |
| 11 | Set APN | W*****,011,APN | APN : APN string |
| 12 | Set IP Address &port number | W*****,012,IP,PORT | <p>IP: xxx.xxx.xxx.xxx PORT: [1,65536]</p> |
| 13 | Open / Close GPRS function | W*****,013,X | <p>X=0 close GPRS X=1 open GPRS</p> |
| 14 | Set time interval of send a GPRS package | W*****,014,XXXXX | <p>XXXXX:means times interval, (Unit: 10s) The max length of XXXXX is in 4 digits XXXXX=00001, means time interval is 10s</p> |

9 SMS Instruction Example:

(1) Send Instruction “W*****,000”

Meaning: Apply one position, EDW-30T will reply one position SMS

(2) Send Instruction “W*****,002,005”

Meaning: Set the time interval of position refresh, EDW-30T will replay one position SMS each 5 minutes in SMS working mode.

(3) Send Instruction “W*****,003,3,1,(area number)+13628888444”

Meaning: when the SOS button be pressed, the EDW-30T will send one SMS to “13628888444”, **and** then dial up “13628888444”. --

(4) Send Instruction “W*****,003,3,2, (area number)+13628888444”

Meaning: when the Dial button B be pressed, the EDW-30T will send one SMS to “13628888444”, **and** then dial up “13628888444”

(5) Send Instruction “W*****,003,1,3, (area number)+013628888444”

Meaning: when the Dial button C be pressed, the EDW-30T will **only** send one SMS to “13628888444”.

(6) Send Instruction “W*****,005,03”

Meaning: when the speed is up 30 km/h, the EDW-30T will send one Alarm SMS the mobile phone linking to SOS alarm

10 GPRS communication setting

step1: Make sure that your SIM card in EDW-30T support the GPRS function

Step2: Set tracker ID of EDW-30T by send one SMS:

SMS Format: W*****,010, Tracker ID

For example :

W000000,010,123456

*“123456” can be considered to be the device’s name. (Tracker ID must be < 14 digits)
If there are several devices ,you can use their Tracker ID to differ from each other.*

EDW-30T will response one SMS to confirm the setting. Like **“Set SIM OK/120”**

Step3 : Set IP address and Port by send one SMS

SMS Format: W*****,012,IP,PORT

IP: xxx.xxx.xxx.xxx

PORT: [1,65536]

Make sure that the IP should be the Extranet IP. If your pc is in Intranet ,you must know your Extranet IP . You may need the help of you network administrator

For example :

W000000,012,202.116.11.12,8000

EDW-30T will response one SMS to check it.

Like **“Set IP ok /202.116.11.12#8000”**

Step4: Set APN

SMS format : W*****,011, APNString

For example :

W000000,011, CMNET

EDW-30T will response one SMS to check it

Like **“set APN OK /CMNET”**

Step5:Set time interval of sending GPRS package

SMS format: W*****,014 , XXXXX

(XXXXX: **Be sure that the time interval MUST be FIVE digits**).

XXXXX: means times interval,

(Unit: 10s)

The length of XXXXX is in 5 digits

XXXXX=00001, means time interval is 10s

For example:

W000000,014,00003

SMS meaning: Make EDW-30T send a GPRS package every 30 seconds

EDW-30T will response one SMS to confirm the setting .

Like “set GPRS Timer ok/00003”

Step6: Enable GPRS function

SMS format: **W*****,013,X**

X=0 close GPRS

X=1 open GPRS

For example: **W00000, 013, 1**

SMS meaning: Make EDW-30T begin GPRS function.

EDW-30T will response one SMS to confirm the setting . Like “open tcp ok”

(Note: 1 EDW-30T default value is GPRS Disable
2 SMS **W0000,013,0** is disable GPRS function)

Step7 : According to the document of our **GTP communication protocols of EDW-30T** , the server can analyses the GPRS data.

(tips:

1 You can get the latitude & longitude data sent from EDW-30T by GPRS every interval time from the Any software of TCP receiver ,which is installed in your PC.

2 if you require the document about GTP communication protocol of EDW-30T, please contact us by e-mail.

3 for bulk number:

You can configure EDW-30T by PC tools named "Parameter Editor" in CD the tools is designed by us,you can use it to configure bulk number of Tracking units,you will need the USB cable provided by us to be able to configure tracking units.

For detail, read the Configuration tool V1.02 User Guide in CD

The screenshot shows the 'GPS Tracker Parameter Editor V1.02' window. It features several input fields and buttons for configuring the device. The fields include APN (set to 'CMNET'), APN Name, APN PW, TM (set to 'S'), ID, IP, Port, Low Bat (set to '1.6V'), Speed (set to 'Km/h'), Area Alarm (set to 'Nul'), Sleep, PW, SMS1, TEL1, SMS2, TEL2, SMS3, TEL3, SMSSTX, TelSTA, Tel, and TM (set to 'Min'). There are also buttons for 'Init All', 'Read All', 'GPRS', 'SMS', and 'Open'. A list of checkboxes on the right side includes 'TelToSMS', 'LcdMode', 'AutoOffTel', 'PctAlarm', 'GPSAlarm', 'SelfEDCH', and 'ExSMSMode'. A 'COM1' dropdown menu is also visible.

11 Caution:

- a) This device is not water-proof and you should use the water-proof bag if necessary
- b) This device works with GPRS/GSM network.
- c) Make sure you have enough credit in the SIM card to avoid any inconveniences.

12 DIY !!! Build your control center system on your PC

We provide one low cost solution to help you build your control center system on your PC, which is much cheaper than other center systems.

You NEED: ---- (*very low cost*)

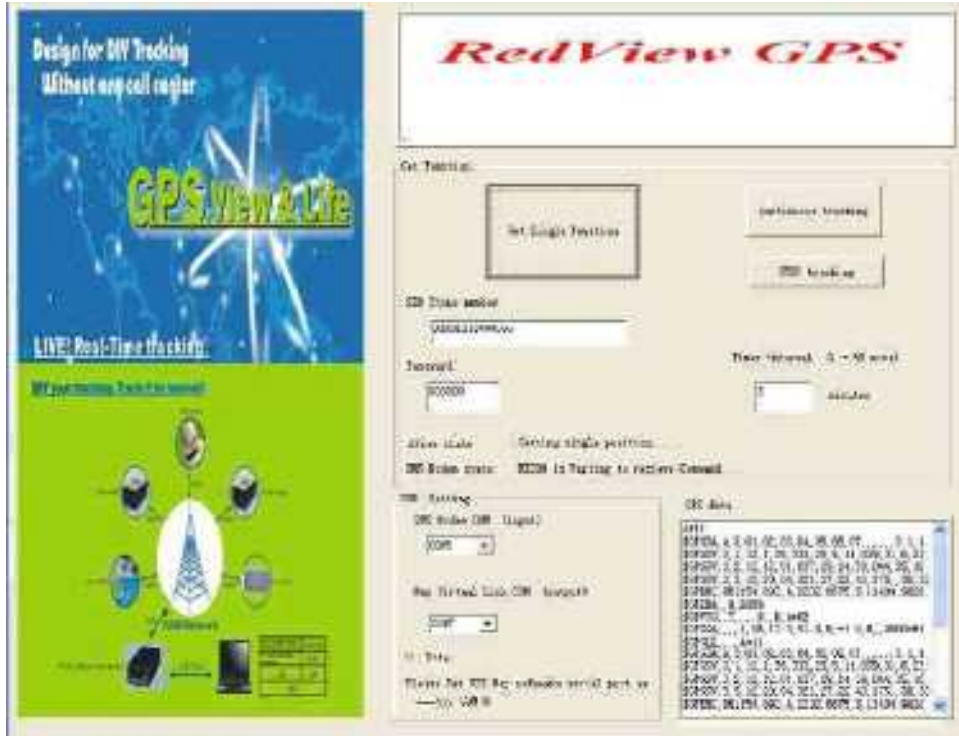
- (1) Google Earth Plus (<http://earth.google.com/products.html>)
Or any other navigation map software (PC version)
- (2) one PC
- (3) HRT200 GSM modem
- (4) Our GPS Tracking software
- (5) Some EDW-30T GPS Trackers

System structure

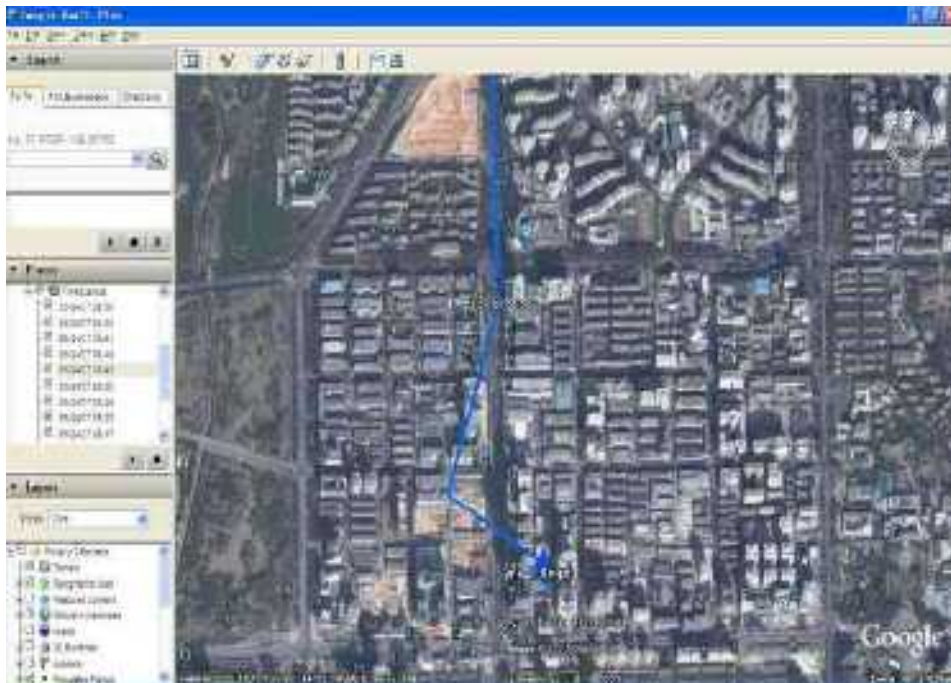


Software Interface

RViewLinker



Google earth



One navigation map software



13 DIY Tracking Kits for GPRS-TCP

Overview

This DIY system was specially developed for Redview GPS Trackers. With this application software, + RedView GPS Tracker, +RViewLinker , you will be able to use your own PC to track the position of your loved one without the need of a call center. For example, you can use this system to monitor your child, the elders, the pets, your car, or the assets installed with our GPS Tracker - live and real-time. Without any payment to the call center.

This application software enables you to use Google Earth to track your vehicle(s) LIVE & Real-Time in office or home by your own PC; without the call center. It can also replay the historical route(s) afterwards.

DIY call center. It is specially designed for small enterprise and family application. You customer can setup its own call center at a very cheap cost, no monthly service payment is required .The position and trace of the target can be shown on electronic map directly, without manual input.

Features:

- 1 Build your own control center system at very low cost;**
- 2 DIY your tracking, and Without any payment to center service;**
- 3 Easily support up to 500 GPS Trackers;**
- 4 Support the trace storage and replay;**
- 5. Living and Real time;**
- 6. Easily use, a good choice for small enterprise, home, small group.**
- 7. The customers can select their favorite map by themselves**

Application :

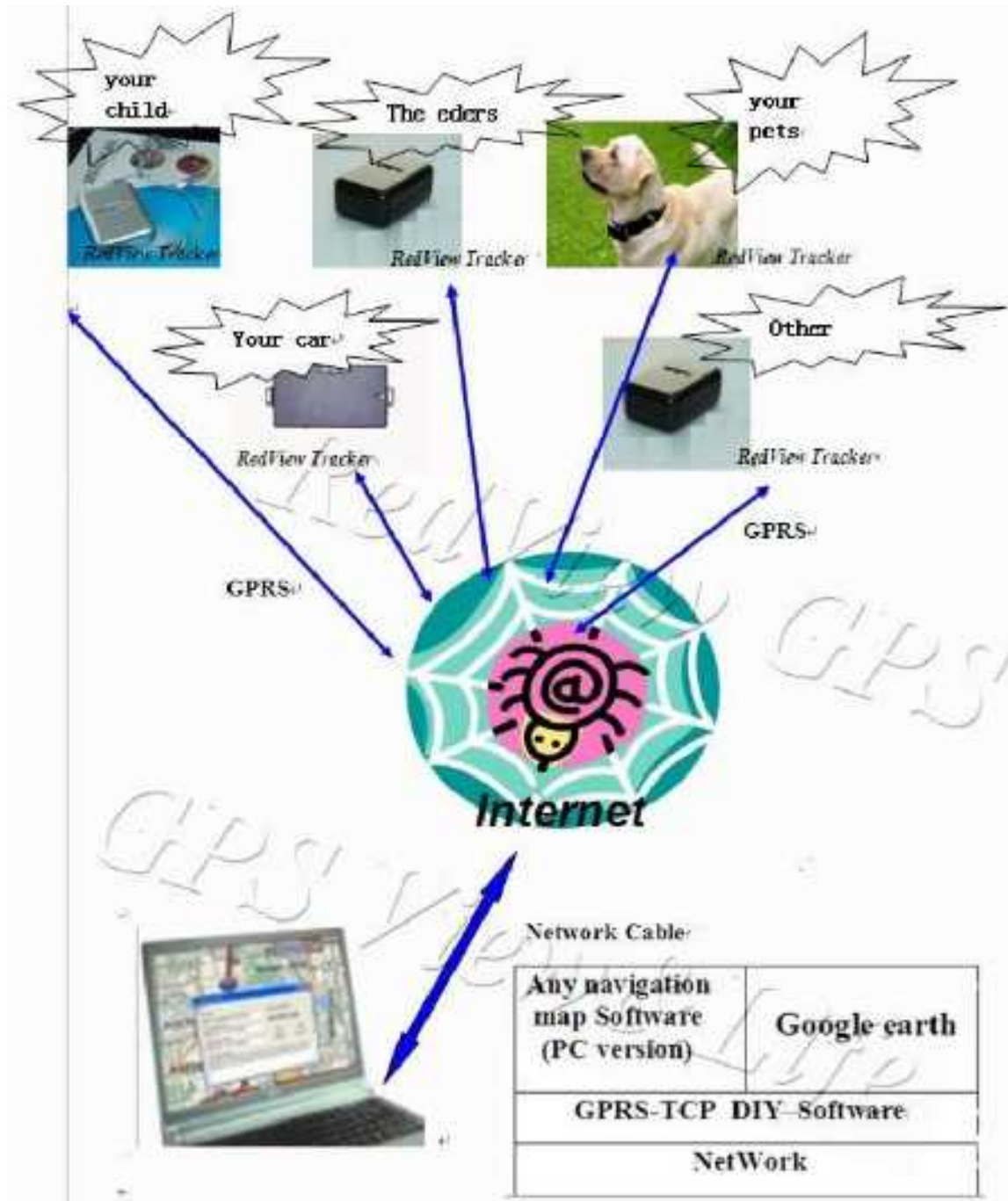
- 1 Personal**
- 2 SOHO**
- 3 Small Enterprise**
- 4 Small Organization**

To build the DIY call center system,

You NEED: ----- (very low cost)

- (1) Google Earth (<http://earth.google.com/products.html>)
Or any other navigation map software (PC version)
- (2) One PC connecting **to the Internet**
- (3) **GPRS-TCP DIY Tracking** software on PC
- (4) Virtual UART driver program
- (5) Some GPS **Tracking Units**

Architecture



14 Trouble shooting

If you find some trouble in using EDW-30T, please refer the following:

(1) Check GPS signal is normal,

In normal ,the blue led should in rapid blink----light for 0.1 second and then dark for 2.8second in turn

If blue led is not in this correct state, it indicate GPS signal is too weak to get position info.

please check following issue:

- (a) Working outdoor, EDW-30T can get better GPS signal;**
- (b) The front side of EDW-30T should be placed toward sky;**
- (c) Charging EDW-30T for 3 hours for the tracker has enough power before usage**

(2) Check GSM signal is normal

In normal ,the green led should in rapid blink ----light for 0.1second and then dark for 2.8s in turn

If green led is not in this correct state, it indicate GSM communication is wrong please try following issue:

- (a) Whether the GSM network is strong enough to make the track unit work.
You can judge it by calling someone thorough your cell phone.**
- (b) Whether the SIM card is installed correctly or not ,and try to pull out and insert SIM card as following picture shows to ensure it; try this operation a few times may help to ensure correct installation**
- (c) Whether there is enough deposit in SIM card or not;**
- (d) Whether your SIM card in EDW-30T support SMS function or not, (including send SMS and receive SMS)**
- (f) Whether SIM card has specific requirement on cell phone or not,
for example whether the SIM card can only use in a appointed cell phone, other cell phone cannot use the SIM card**
- (g) Whether SIM card is binding to the specific cell phone or not**

(h) Whether SIM card need some authorization when using it

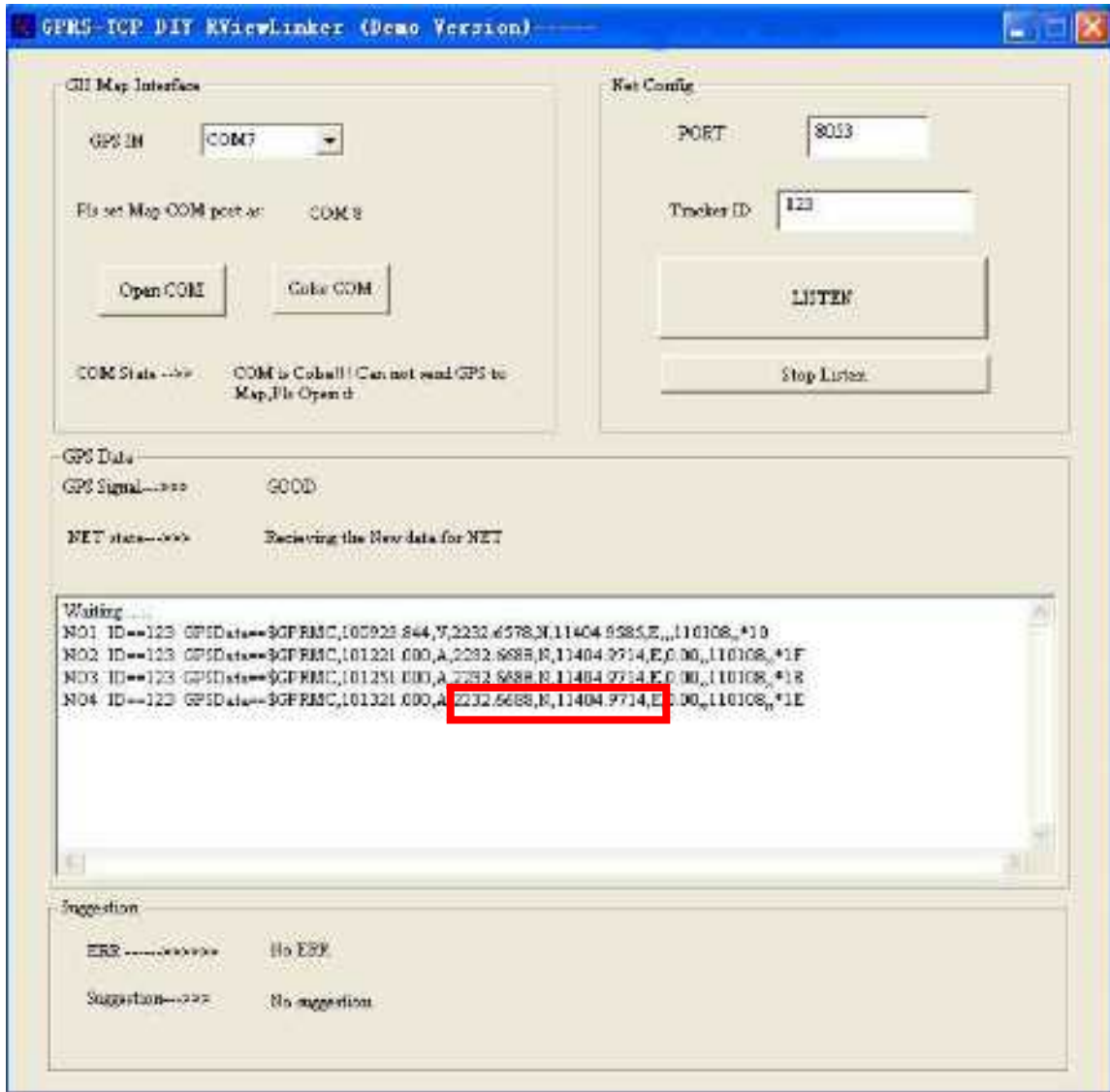
For example, you need type one password when you use the kind of SIM cards

(i) Whether the tracker has enough power to work, we strongly suggest it was charged at least 3 hours before use it

(3) The SMS which be replied by EDW-30T is including the chars --- “ Last”
It is indicate the GPS signal is weak.

Attachment A :

You can get the latitude & longitude data sent by the EDW-30T every interval time from the software ,which is installed in your PC.



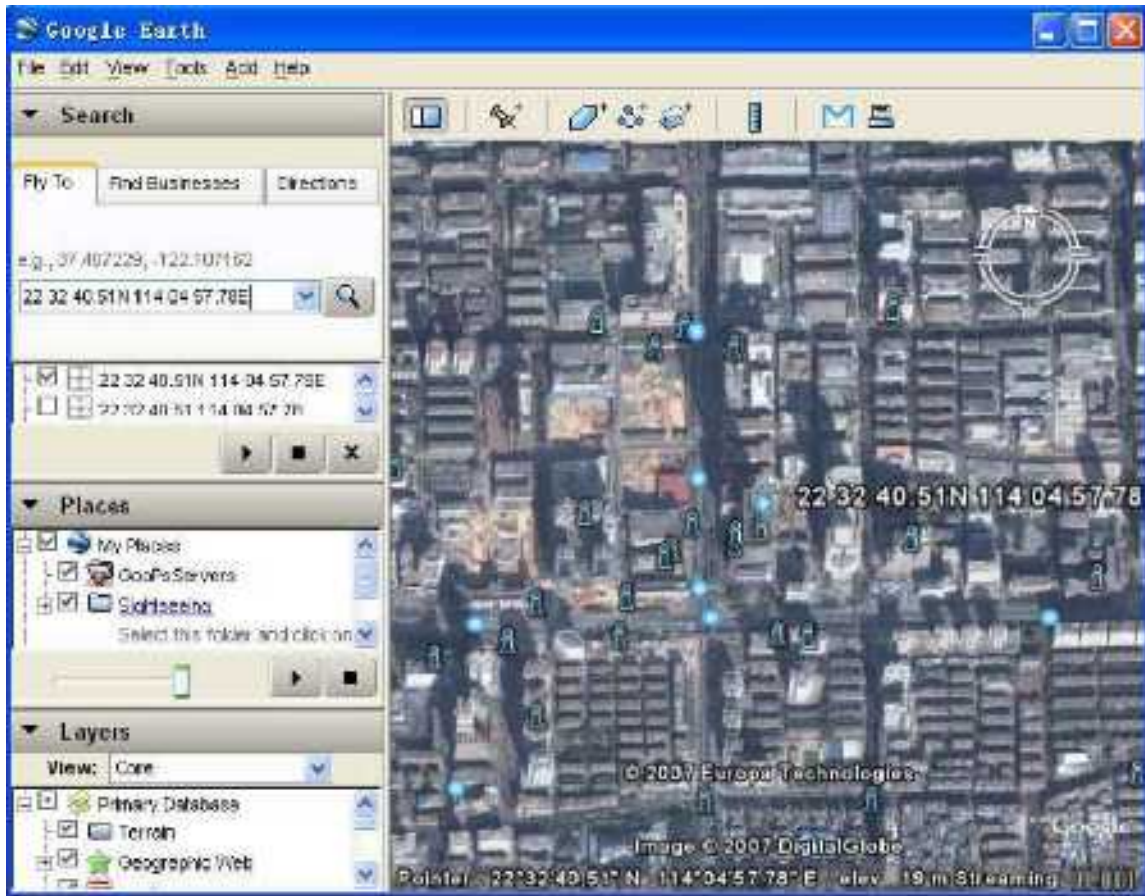
And then you must edit the data as format below

Format: 22 32 40.51N 114 04 57.78E

(N is the north latitude, and E is the east longitude)

Now you can Input the latitude and longitude as following, and click on the searching button,.

Now you can find the exact position of the tracker



Attachment B: Worldwide APN (Access Point Name) List

| Country | Mobile operator | Access point name |
|----------------|---------------------|---------------------------------------|
| Argentina | Personal | gprs.personal.com |
| Argentina | Unifon | internet.gprs.unifon.com.ar |
| Australia | Telstra | telstra.internet |
| Australia | Optus | internet |
| Australia | Three | 3netaccess |
| Australia | Vodafone | internet |
| Austria | Max Online | gprs.internet |
| Austria | One | wap.one.at |
| Belgium | Orange | orangeinternet |
| Belgium | Mobistar | web.pro.be |
| Belgium | Proximus | internet.proximus.be |
| Bermuda | AT&T | proxy |
| Bermuda | Mobility | net.bm |
| Brazil | Claro | claro.com.br |
| Brazil | Oi | gprs.oi.com.br |
| Brazil | TIM | tim.br |
| Bulgaria | Mobitel (Mtel) | inet-gprs.mtel.bg |
| Canada | Fido | internet.fido.ca |
| Canada | Rogers AT&T | internet.com |
| Chile | Entel PCS | imovil.entelpcs.cl bam.entelpcs.cl |
| Chile | Telefonica GSM | web.tmovil.cl |
| China | China Mobile | cmnet |
| Croatia | VIPNET | gprs.vipnet.hr |
| Czech Republic | Eurotel | internet |
| Czech Republic | Oskar | internet |
| Czech Republic | Oskar prepaid cards | ointernet |
| Czech Republic | T-Mobile | internet.t-mobile.cz |

| | | |
|--------------------|---------------------------------|-------------------------------|
| Denmark | TDCmobil | internet |
| Denmark | Orange | web.orange.dk |
| Egypt | Vodafone | internet.vodafone.net |
| Dominican Republic | Orange Dominicana | orangenet.com.do |
| Finland | Telia Mobile | internet |
| Finland | DNA | internet |
| Finland | Sonera | internet |
| Finland | Radiolinja | internet |
| Finland | Saunalahti | saunalahti |
| France | Orange | orange.fr |
| France | SFR | websfr |
| France | Bouygues Telecom | eBouygTel.com |
| Germany | D2 Vodafone | web.vodafone.de |
| Germany | E-Plus | internet.eplus.de |
| Germany | O2 | internet |
| Germany | Quam | quam.de |
| Germany | T-Mobile D1 | internet.t-d1.de |
| Greece | Vodafone | internet.vodafone.gr |
| Greece | Teletet | gint.b-online.gr |
| Greece | Cosmote | internet |
| Hungary | Vodafone (Prepaid "Optimized") | vitamax.internet.vodafone.net |
| Hungary | Vodafone (Prepaid "Standard") | vitamax.snet.vodafone.net |
| Hungary | Vodafone (Postpaid "Optimized") | internet.vodafone.net |
| Hungary | Vodafone (Postpaid "Standard") | standardnet.vodafone.net |
| Hong Kong | CSL | internet |
| Hong Kong | Orange | web.orangehk.com |
| Hong Kong | New World | internet |
| Hong Kong | People | internet |
| Hong Kong | SmarTone | internet |

| | | |
|-------------|-------------------------|---------------------------|
| Hong Kong | Sunday | internet |
| India | Orange, Hutch | www |
| Iceland | Siminn | gprs.simni.is |
| India | BPL Mobile | bplgprs.com |
| India | Airtel | airtelgprs.com |
| Indonesia | Telkomsel | internet |
| Ireland | O2 | internet |
| Ireland | Vodafone | live.vodafone.com |
| Israel | Cellcom | internetg |
| Israel | Orange | internet |
| Italy | TIM | uni.tim.it ibox.tim.it |
| Italy | Vodafone Omnitel | web.omnitel.it |
| Italy | Wind | internet.wind |
| Latvia | Latvia Mobile Telephone | internet.lmt.lv |
| Luxembourg | LUXGSM | web.pt.lu |
| Luxembourg | Tango | internet |
| Malaysia | Celcom | celcom.net.my |
| Mexico | Movistar | internet.movistar.mx |
| Mexico | Telcel | internet.telcel.com |
| Montenegro | Monet | gprs.monetcg.com |
| Netherlands | T-Mobile | internet |
| Netherlands | KPM Mobile | internet |
| Netherlands | Orange | internet |
| Netherlands | O2 | internet |
| Netherlands | Vodafone (normal) | web.vodafone.nl |
| Netherlands | Vodafone (business) | office.vodafone.nl |
| New Zealand | Vodafone NZ | www.vodafone.net.nz |
| Norway | Netcom | internet.netcom.no |

| | | |
|-------------------|-------------------|-----------------------|
| Norway | Telenor | internet |
| Pakistan | Ufone | ufone.internet |
| Paraguay | Personal | internet |
| Paraguay | Tigo | internet.tigo.py |
| Philippines | Smart | internet |
| Philippines | Globe | internet.globe.com.ph |
| Poland | Era | erainternet |
| Poland | Idea | www.idea.pl |
| Poland | PlusGSM | www.plusgsm.pl |
| Portugal | Optimus | internet |
| Portugal | TMN | internet |
| Portugal | Vodafone (Telcel) | internet.vodafone.pt |
| Romania | Connex | internet.connex.ro |
| Romania | Orange | internet |
| Russia | BeeLine | internet.beeline.ru |
| Russia | Megafon | internet.nw |
| Russia | MTS | internet.mts.ru |
| Russia | PrimTel | internet.primtel.ru |
| Saudi Arabia | Saudi Telecom | Jawalnet.com.sa |
| Serbia-Montenegro | Mobtel Srbija | internet |
| Serbia-Montenegro | Telekom Srbija | gprsinternet |
| Singapore | M1 | sunsurf |
| Singapore | Singtel | internet |
| Singapore | Starhub | shwapint |
| Slovakia | Eurotel | internet |
| Slovakia | Orange | internet |
| South Africa | MTN | internet |
| Spain | Amena | amenawap |

| | | |
|-------------|-----------------------|---------------------------|
| Spain | Telefonica (Movistar) | movistar.es |
| Spain | Vodafone | airtelnet |
| Sweden | Telia | online.telia.se |
| Sweden | Vodafone SE | internet.vodafone.net |
| Switzerland | Swisscom | gprs.swisscom.ch |
| Switzerland | Orange CH | internet |
| Switzerland | sunrise | internet |
| Switzerland | UMC | www.umc.ua |
| Taiwan | Chunghwa Telecom | internet |
| Taiwan | Far EasTone | fetnet01 |
| Taiwan | KG Telecom | internet |
| Taiwan | Taiwan Cellular | internet |
| Thailand | AIS | internet |
| Thailand | DTAC | www.dtac.co.th |
| Turkey | Avea | internet |
| Turkey | Aycell | aycell |
| Turkey | Telsim | telsim |
| Turkey | Turkcell | internet |
| UK | Jersey Telecom | pepper |
| UK | O2 | mobile.o2.co.uk |
| UK | T-Mobile | general.t-mobile.co.uk |
| UK | Vodafone UK | internet |
| UK | Orange | orangeinternet |
| Ukraine | Kyivstar GSM | www.kyivstar.net |
| Ukraine | UMC | www.umc.ua |
| USA | T-Mobile | internet2.voicestream.com |
| USA | AT&T | proxy |
| USA | Cingular | isp.cingular |
| Venezuela | Digital TIM | gprsweb.digitel.ve |



www.eddywireless.com
www.eddywireless.biz